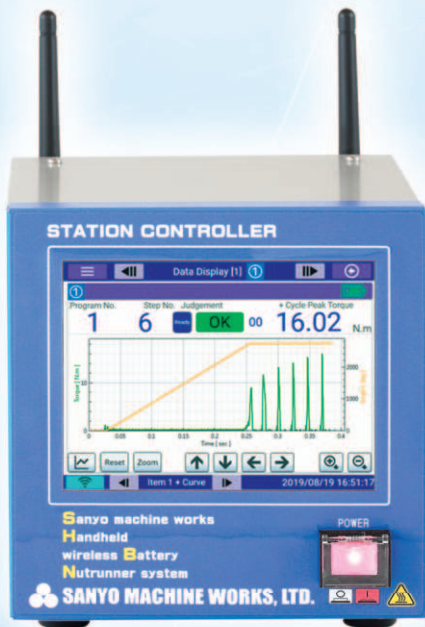


Sanyo machine works
Handheld
wireless **B**attery
Nutrunner system



**High quality, low reaction
wireless nutrunner
With ergonomic
"Impact mode".**

Newly ultra-compact and high-performance controller

Abundant communication and data collection functions

Tool features high speed and high accuracy together with low weight, and low reaction



Front LED

Status indicator LED

The tool can store up to 16 times fastening data and torque curve data. Fastening data can be sent to the station controller even while fastening is continuous.

Flexible programming allows for double tightening and other complex fastening operations.

Approximately 2,000 fastening cycles are available on one charge.(SHB-TA1-016P) (Maximum tightening torque at hard joint)

Reinstall the battery within one minute to resume fastening immediately. (No waiting for communication connection)

Operate from the multi-function touch panel of the Station Controller



Created with Sanyo's advanced fastening technology. Supports your production perfectly!

Communication Specifications of Station Controller

Choose with wireless LAN or without wireless LAN to connect to the external access point. Reduce the risk of radio wave interference by connecting multiple station controllers to the access point.

With wireless LAN

Ex. In the case 3 controllers, 3ch used.



Without wireless LAN

Ex. In the case 3 controllers, only 1ch used.



Auto Adjusted Impact Mode Fastening

The SHBN tools offers an Impact mode setting that **automatically adjusts pulse speed and frequency to create repeatable torque accuracy with minimum reaction.** This Auto impact mode is perfect for changing joint conditions on the same work piece (ex. soft joint / hard joint).

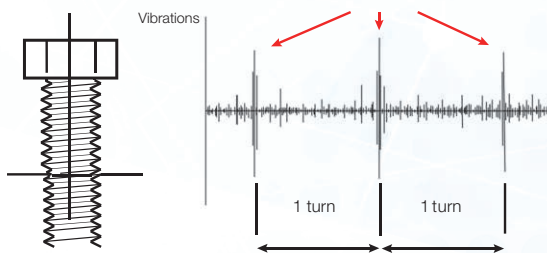


Cross Thread Prevention Function

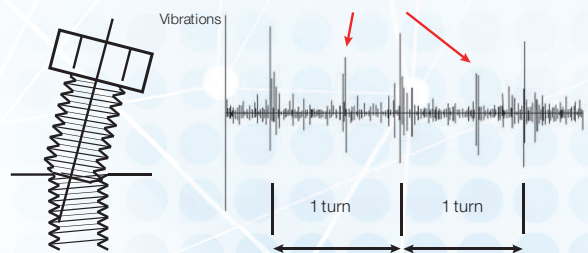
By the counterclockwise running, some vibrations will be noticed when a screw bolt climbs over at the edge. The kind of vibrations becomes different between a proper alignment and an improper alignment. Detecting them, NR can judge whether the cross-thread occurs or not.

As soon as a 2nd times vibration is detected clearly at the edge of the first pitch, NR will go forward to the rundown step.

There will be only the climb over vibrations.



In no good alignment, other vibrations will occur.



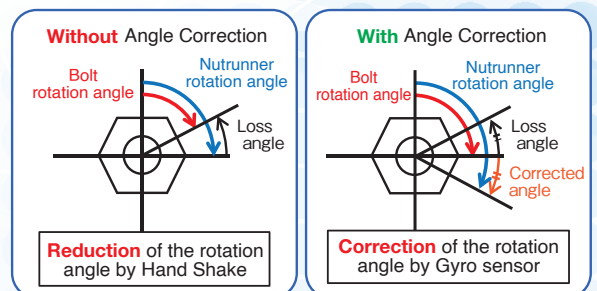
Operator Influence Angle Auto Correction Function

By equipping an optional tool Gyro sensor, the loss angle due to hand shake can be corrected to an accurate angle.

This function observes and calculates the angle of the tool while fastening in real time.



Ex. : Tightening angle is 90 deg.



Batch Count Function

●FASTENING NUMBER COUNT

Batch count function is available for tracking multiple fastening cycles in a single workpiece. Once the set number of cycles in the batch are completed satisfactorily an OK signal is sent.

●SWITCHING FASTENING PROGRAM

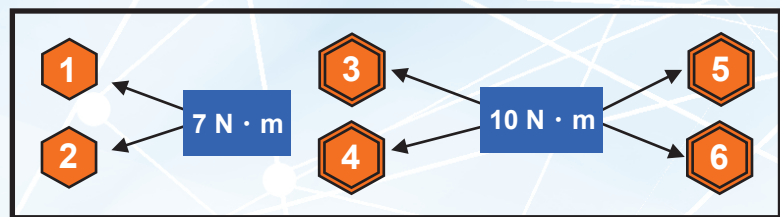
Each cycle in the batch can run the same program and parameters or unique program and parameters. This is useful when tightening to different torques or using different fastening methods within a single workpiece. This function offers great flexibility in the production process and allows the tool to be set to each workpieces unique characteristics and specifications.

●VARIOUS OPTION SETTING

Additional settings are available to increase the tools production process flexibility. Optional settings such as Count UP/DOWN indication, fastening OK count/OK+NG count, count backward/forward are available to meet your various tightening processes.

- Tightening Sequence -

- ① 7N·m
- ② 7N·m
- ③ 10N·m
- ④ 10N·m
- ⑤ 10N·m
- ⑥ 10N·m



Target torque is changeable according to the fastening sequence.

Specifications

Tool Specification

Item	Specification		
Model	SHB-TA1-016P	SHB-TA1-032P	SHB-TB1-090A
Maximum Torque(Impact Mode)	16N·m	32N·m	90N·m
Free Speed	2000rpm	1760rpm	557rpm
Wireless Communication	Wireless LAN 2.4GHz / 5GHz		
Weight (without battery)	1.2kg	1.4kg	3.4kg

Battery Specification

Item	Specification
Model	SHB-BT-25
Type	Lithium Ion
Voltage	25.2V
Capacity	2.0Ah
Weight	540g

Station Controller Specification

Item	Specification
Model	SHB-SC
Interface	I/O (8 points each input/output) ×2 ports (Maximum 4 ports by option) RS232C×2 ports (Maximum 4 ports by option) USB×2 ports Ethernet×1 port Field network (Option)
Input Power	AC100~240V 50/60Hz (AC Adapter)
Maximum Power Consumption	360W
Weight	1.3kg

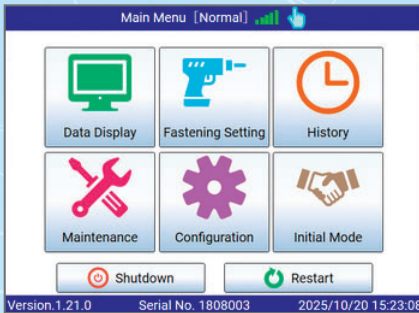
Battery Charger Specification

Item	Specification
Model	SHB-BCA
Charge Time	Over 80% in about 60 minutes
Protection Function	Protection over charging
Display Function	LED display (3 colors / 6 level)
Input Power	AC100~240V 50/60Hz
Weight	580g

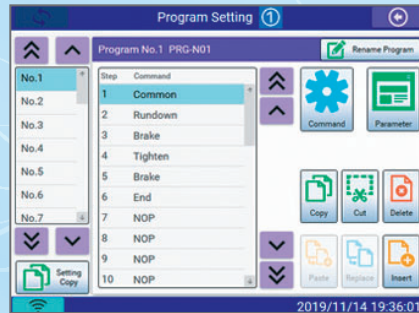
* Please contact us for details of product models.

Station Controller Screen

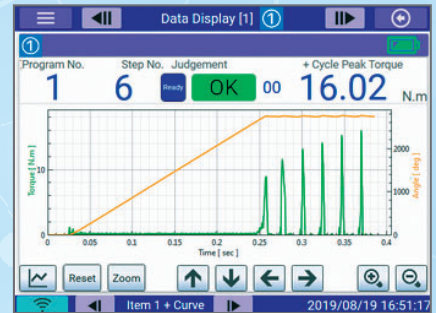
The station controller allows editing of all SHBN settings using the touch panel. Fastening data can be displayed in selectable items, torque curve display, all-axis display, and automatically stored history data can be easily viewed.



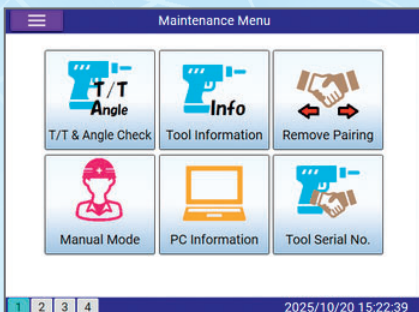
Main Menu Screen



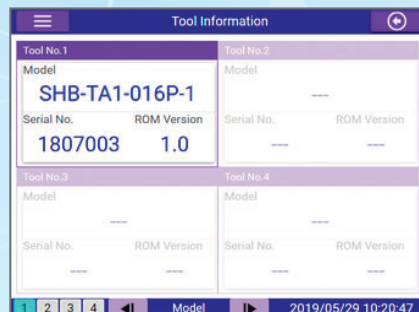
Fastening Setting Screen



Fastening Data Screen



Maintenance Menu Screen



Tool Information Screen

No.	Date/Time	Peak Torque (N.m)	Time (sec)	Status
1	2019/03/01 17:01:16	16.25	0.4	OK
2	2019/03/01 17:01:13	16.41	0.4	OK
3	2019/03/01 17:01:11	16.39	0.3	OK
4	2019/03/01 16:45:18	0.00	0.0	ERR
5	2019/03/01 16:44:48	0.00	0.0	ERR
6	2019/03/01 16:44:39	0.00	0.0	ERR

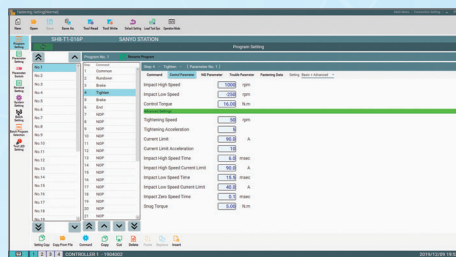
Storage Fastening Data Screen

Station Controller Terminal (Software for Windows) Screen

The Station Controller Terminal is a Windows software that can display the fastening torque curve, fastening history, and collect fastening data as well as set fastening settings. Recorded data can be saved as a file.



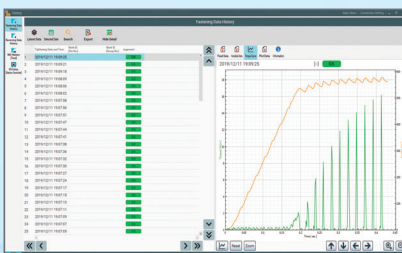
Main Menu Screen



Fastening Setting Screen



Fastening Data Screen



Storage Fastening Data Screen

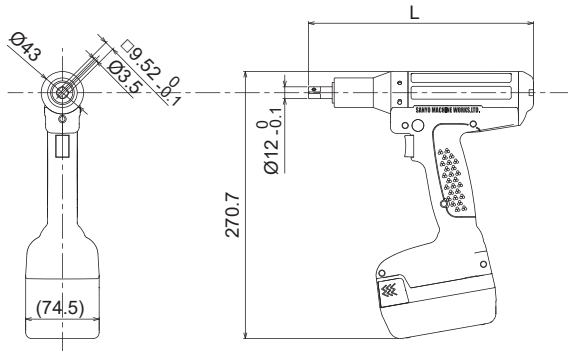
No.	Start Time	End Time	Status	Message
COM0001	2025/10/13 14:30:01	2025/10/13 14:30:01	OK	Station Controller Start
COM0002	2025/10/13 14:30:01	2025/10/13 14:30:01	OK	Data Acquisition Start
COM0003	2025/10/13 14:30:01	2025/10/13 14:30:01	OK	Data Acquisition Run Start
COM0004	2025/10/13 14:30:01	2025/10/13 14:30:01	OK	Data Acquisition Run Stop
COM0005	2025/10/13 14:30:01	2025/10/13 14:30:01	OK	Data Acquisition Run Complete
COM0006	2025/10/13 14:30:01	2025/10/13 14:30:01	OK	Data Acquisition Run Stop
COM0007	2025/10/13 14:30:01	2025/10/13 14:30:01	OK	Data Acquisition Run Start
COM0008	2025/10/13 14:30:01	2025/10/13 14:30:01	OK	Data Acquisition Run Stop
COM0009	2025/10/13 14:30:01	2025/10/13 14:30:01	OK	Data Acquisition Run Complete
COM0010	2025/10/13 14:30:01	2025/10/13 14:30:01	OK	Data Acquisition Run Stop

Data Acquisition Screen

No.	Date/Time	Peak Torque (N.m)	Time (sec)	Status
COM0001	2025/10/13 14:30:01	16.03	0.4	OK
COM0002	2025/10/13 14:30:01	16.03	0.4	OK
COM0003	2025/10/13 14:30:01	16.03	0.4	OK
COM0004	2025/10/13 14:30:01	16.03	0.4	OK
COM0005	2025/10/13 14:30:01	16.03	0.4	OK
COM0006	2025/10/13 14:30:01	16.03	0.4	OK
COM0007	2025/10/13 14:30:01	16.03	0.4	OK
COM0008	2025/10/13 14:30:01	16.03	0.4	OK
COM0009	2025/10/13 14:30:01	16.03	0.4	OK
COM0010	2025/10/13 14:30:01	16.03	0.4	OK

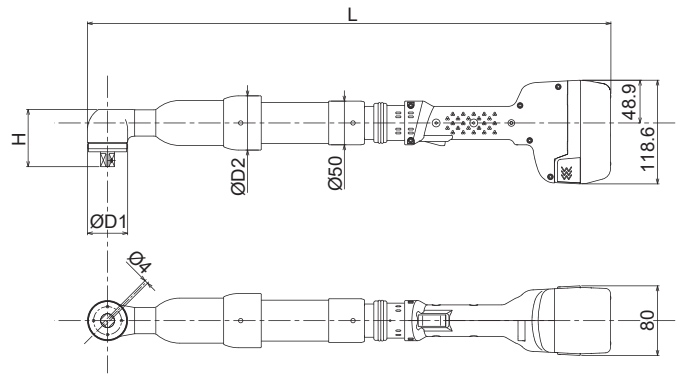
Acquisition Data Display Screen

Dimensions



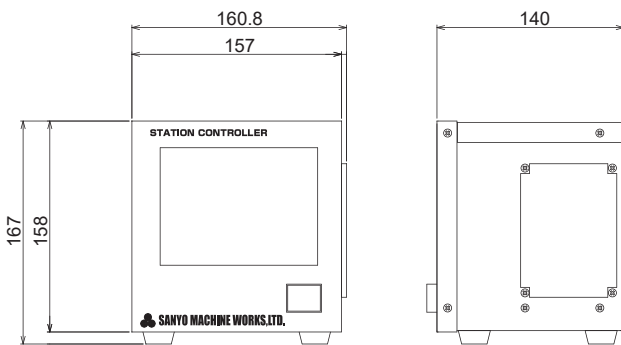
Pistol Tool

Model	L(mm)
SHB-TA1-016P	228
SHB-TA1-032P	244.5

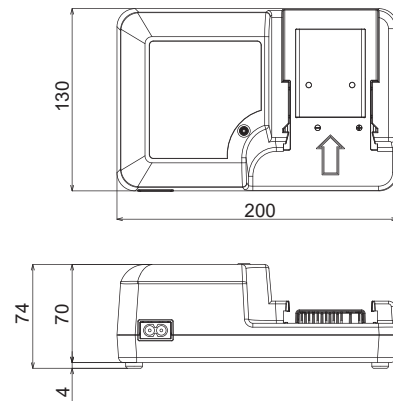


Angle Tool

Model	Size(mm)				Output Axis size(mm)
	D1	D2	H	L	
SHB-TB1-090A	46	62	65.5	599	12.7



Station Controller



Battery Charger

* The above-mentioned specification may be changed without prior notice.



JQA-QM3832



CM009

SANYO MACHINE WORKS, LTD.

No.1 Oka, Okimura, Kitanagoya, Aichi, Japan TEL:(0568)21-1111 FAX:(0568)23-4711
 ●URL: <https://www.sanyo-machine.co.jp> ●e-mail: west-japan-sales@sanyo-machine.co.jp

SANYO MACHINE AMERICA CORPORATION

950 S.Rochester Rd., Rochester Hills, Michigan 48307 U.S.A. TEL:248-651-5911 Fax:248-651-5915
 ●URL: <http://www.sanyo-machine.com> ●e-mail: sales@sanyo-machine.com

SANYO CANADIAN MACHINE WORKS, INC.

33 Industrial Drive, Elmira, Ontario, N3B 3B1 Canada TEL:519-669-1591 Fax:519-669-5346
 ●URL: <http://www.sanyomachine.on.ca> ●e-mail: sales@sanyomachine.on.ca

SIAM SANYO MACHINE WORKS LTD.

777/24 Moo 9, Bangpla, Subdistrict Bangplee District, Samutprakarn 10540 Thailand TEL:02-136-5901 FAX:02-136-5902